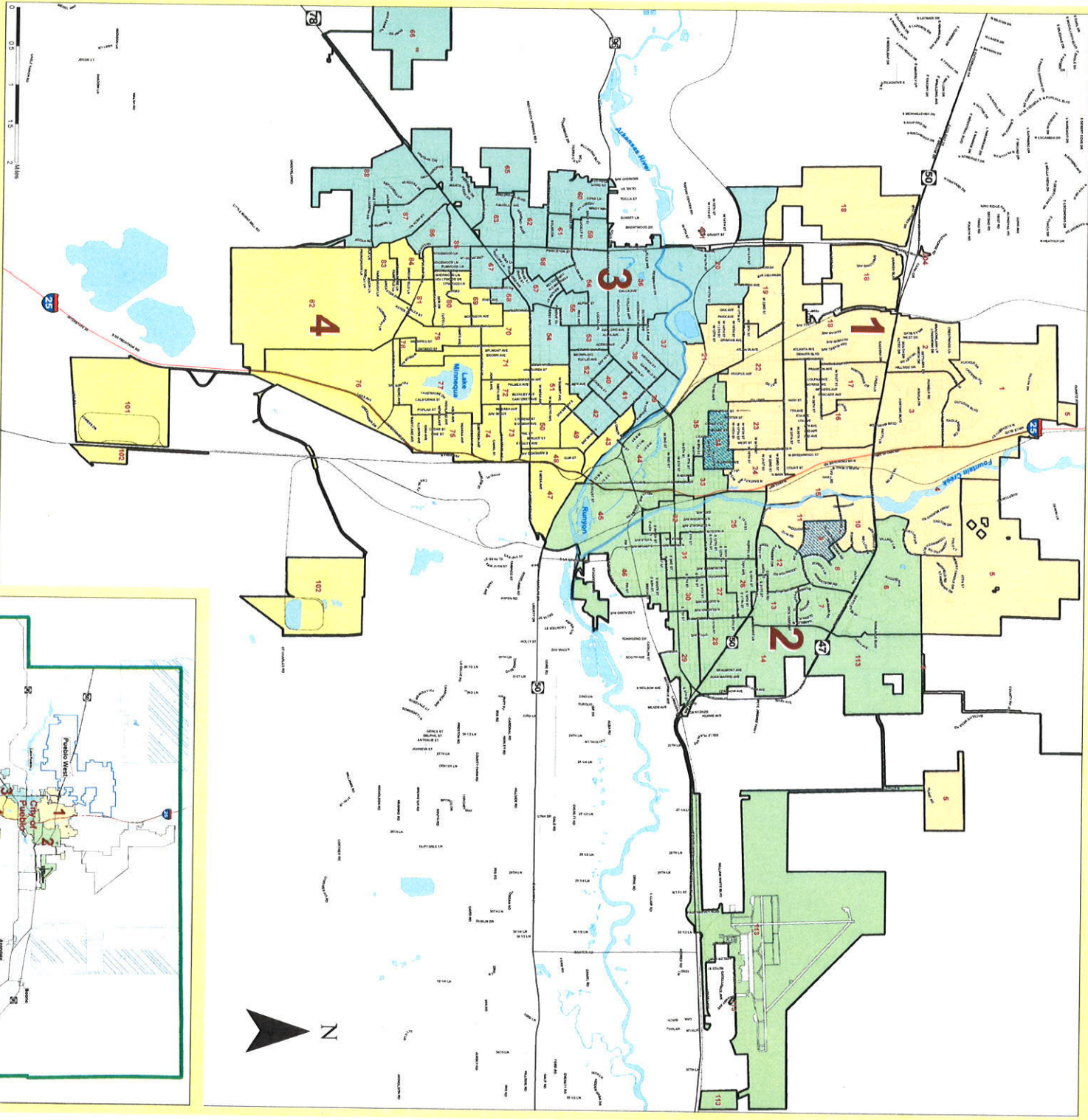


2017 Pueblo City Council Districts

Approved: April 2017 for November 2017 Election



LEGEND

- 2017 City Council Districts**
- District 1
 - District 2
 - District 3
 - District 4
- Precincts Changed From 2013 to 2017**
- Precincts

ESTIMATED CITY POPULATION

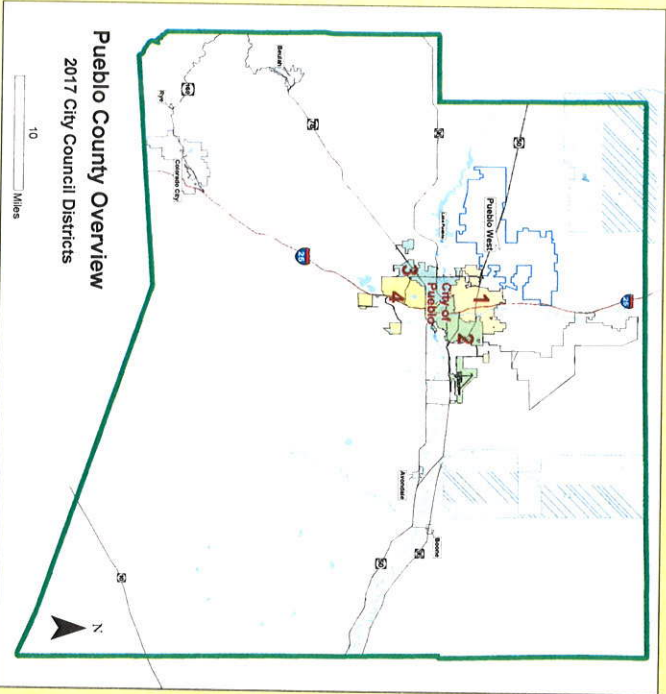
12/31/2016
108,670

IDEAL POPULATION PER DISTRICT - 27,168

DIST.	POP.	DEV.	% DEV.	% HISPANIC
1	27,248	81	0.3%	42.1%
2	27,312	145	0.5%	58.6%
3	27,107	-61	-0.2%	40.0%
4	27,003	-165	-0.6%	58.4%

This map is for informational purposes only. Population data is based on the 2010 Census, plus residential construction and lease residential demolitions. Base data is derived from the 2010 Census. The City of Pueblo disclaims all responsibility for the accuracy of the data. For more information contact the Pueblo City Clerk.

Map created by: City of Pueblo, GIS Division
Date: 4/20/17
By: [Name]



Pueblo County Overview
2017 City Council Districts